

# SP-010

exteria

## SPECIFICATION SHEET

Architectural, Functional and Green Renewable. Exteria's Solar LED bollard is the perfect architectural grade bollard for renewable and low maintenance applications. Featuring a smart motion sensor, variety of optic selections, and color temperature options, these Solar LED Bollards make it ideal for applications such as resorts, off-road hiking trails, shopping malls, and other exterior applications.

### FINISH



Black



Gray



Platinum silver

### CCT



3000K



4000K



5700K



Blue

### MOUNTING



Surface  
Mounted

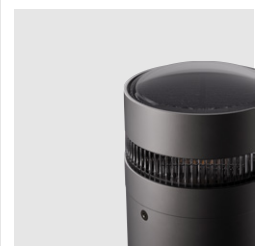
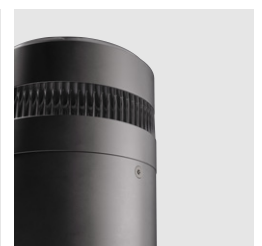


Embedded

### DISTRIBUTION



Round



### Plug-and-Play

Designed for effortless deployment, the solar fixtures operate independently with no external wiring or transformers required. Installation is quick and clean, with no trenching, re-paving, or complex electrical connections, making them ideal for both new and retrofit projects.

### LISTING



## ELECTRICAL

Power Storage	Panasonic Eneloop battery 6Ah. 3.6Vdc, Lifespan: 8 - 10 years
Charging Time	Requires approximately 4 hours of direct sunlight for a full charge, or 8 hours under overcast weather conditions
Solar Deprivation Limit	Fully charged unit can operate for 3–4 consecutive days without sunlight (up to 5 days maximum under extended low-light conditions)
Solar Panel	High-efficiency crystalline silicon (1 x 8W), Lifespan: 20 years
Drive Current	125mA constant

## PHOTOMETRIC PERFORMANCE

Lumen Output	10.5 lm
Color Temperature	3000K, 4000K, 5700K, Blue
Lumen Maintenance	> 60,000 Hours (L70)

## OPERATIONAL

Operating Duration	Minimum 12 hours of illumination per night under normal charging. Excess stored energy is carried over to the following night.
Control System	Exterial's Solar Controller System (5V 2A) integrating a photocell on/off switch and motion sensor for automatic operation
Photocell Control	Fixture automatically turns ON at 1.5 footcandles and OFF at 3 footcandles

## PHYSICAL

Dimension	Ø6.3" x 33.5" (SP-010), Ø6.3" x 13.5" (SP-010s)
Material	Extruded aluminum
Finish	Black, Gray, Platinum Silver
Weight	17.7 lbs (SP-010) / 11 lbs (SP-010s)
Anchorage	Anchor base with stainless steel anti-theft screws
Mounting	Embedded, Surface mounted

## ENVIRONMENTAL

Operating Temperature	-40°F ~ 140°F
Ingress Protection	IP65
Listing	FCC, Wildlife Lighting Certification: 2019-204

## WARRANTY

Warranty	3-year limited warranty
----------	-------------------------

CATALOG

PROJECT	TYPE	QUANTITY
---------	------	----------

PRODUCT CONFIGURATOR 

Try our **product configurator** on our website to easily specify your requirements and add items to a fixture list.

			RD	
MODEL	CCT	FINISH *	DISTRIBUTION	ANCHORAGE
<b>SP010</b> SP-010	<b>30K</b> 3000K	<b>BLK</b> Black	<b>RD</b> Round	<b>AKE</b> Embedded
<b>SP010S</b> SP-010s Short	<b>40K</b> 4000K	<b>GRY</b> Gray		<b>AKS</b> Surface Mounted
	<b>57K</b> 5700K	<b>PTS</b> Platinum Silver		
	<b>BLU</b> Blue			

Notes

\* Uses high corrosion-resistant materials for the coating and sealant to prevent damage from long-term exposure to saltwater environment.

DIMENSIONS

SP-010	SP-010s
