

NOVALINK

SPECIFICATION SHEET
NOVALINK SYSTEM

INTEGRATED LIGHTING INFRASTRUCTURE WITH BUILT-IN ILLUMINATION

Housing

Dimensions :

NovaLink 2ft : 24.9" x 5.5" x 3.8"

NovaLink 4ft : 48.2" x 5.5" x 3.8"

Corner : 11.1" x 5.48" x 3.78"

Weight :

NovaLink 2ft : 10.8 lbs

NovaLink 4ft : 21.6 lbs

Corner : 5.5 lbs

Material

Housing : High Pressure Die-Cast Aluminum, Tempered Glass

Mounting : Corrosion-resistant fluorocarbon-coated steel

Power Input

120W, 240W | 120-277V

Lumen Output

Uplight : 33,611 lm (240W)

Downlight Blades : 22,519 lm (240W)

Dimming

Standard 0-10V : Dims to 10%

Color Quality

CRI 85

Rated Life

> 100,000 Hours (L70)

Finish



Black



White

Color Temperature



3000K



3500K



4000K



5000K

Distribution



Direct
Uplight



Indirect
Downlight



Hybrid

Mounting



Adjustable
Cable Mount



Stem Mount

Warranty

5 Year limited warranty

Listing

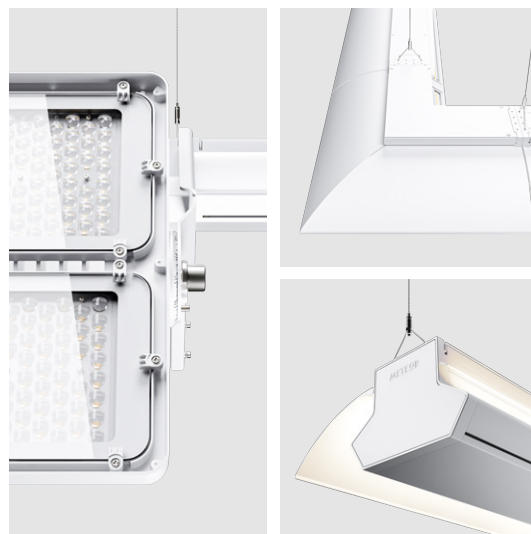


METEOR

Light + Structure. One System.

NovaLink System is a modular suspended lighting infrastructure that integrates performance and simplicity into one clean solution. Offered in 2 ft and 4 ft segments, its sleek linear rails feature concealed wiring for a streamlined appearance and quick installation.

The system supports a variety of configurations, including non-illuminated or integrated LED channels for upward or downward ambient lighting. When paired with the Bolt Nova fixture, the NovaLink System delivers powerful asymmetric indirect lighting, ideal for large-scale spaces like natatoriums or arenas. The integrated linear lighting provides flexible fill illumination for spectator areas, circulation zones and general lighting all within a unified framework.



meteor-lighting.com

SPECIFICATION

PROJECT NAME

DATE

NOVALINK

<input type="text"/>	MODEL	NL2 NovaLink 2ft	NL4 NovaLink 4ft
<input type="text"/>	WATTAGE	D120 ¹ NovaLink 2ft 60W per side D240 ² NovaLink 4ft 120W per side	S100 ¹ NovaLink 2ft 100W single side S200 ² NovaLink 4ft 200W single side
<input type="text"/>	CCT / CRI	308 3000K / CRI 85 508 5000K / CRI 85	358 3500K / CRI 85 408 4000K / CRI 85
<input type="text"/>	VOLTAGE	UNV 120-277V	
<input type="text"/>	DIMMING	STV Standard 0-10V dims to 10%	
<input type="text"/>	FINISH	BLK Black	WHT White
<input type="text"/>	MOUNTING	AD10 Adjustable Cable 10ft	ST2 Stem 2ft ST4 Stem 4ft
<input type="text"/>	RATING	OUT ³ Outdoor Rating	NAT ⁴ Natatorium Rating

¹ Option is not compatible with NL4

² Option is not compatible with NL2

³ Outdoor Rating: Coating and wiring will be changed to high UV resistant and corrosion resistant materials for long term operation in outdoor environments

⁴ Natatorium rating: Coating and sealant will be changed to high corrosion resistant materials to prevent damage from long term exposure to chlorine vapors

NOVALINK CORNER

<input type="text"/>	MODEL	NLC NovaLink Corner
<input type="text"/>	WATTAGE	D70 23W Inner 47W Outer S130 30W Single Inner Side SO60 60W Single Outer Side
<input type="text"/>	CCT / CRI	308 3000K / CRI 85 508 5000K / CRI 85 358 3500K / CRI 85 408 4000K / CRI 85
<input type="text"/>	VOLTAGE	UNV 120-277V
<input type="text"/>	DIMMING	STV Standard 0-10V dims to 10%
<input type="text"/>	FINISH	BLK Black WHT White
<input type="text"/>	RATING	OUT ¹ Outdoor Rating NAT ² Natatorium Rating

¹ Outdoor Rating: Coating and wiring will be changed to high UV resistant and corrosion resistant materials for long term operation in outdoor environments

² Natatorium rating: Coating and sealant will be changed to high corrosion resistant materials to prevent damage from long term exposure to chlorine vapors

SPECIFICATION

PROJECT NAME

DATE

NOVALINK DOWNLIGHT BLADE

NLB	MODEL	NLB NovaLink Downlight Blade		
	LENGTH	2 2 ft	4 4 ft	CI Corner Inner Side
		CO Corner Outer Side		
WHT	FINISH	WHT White		

¹ Outdoor Rating: Coating and wiring will be changed to high UV resistant and corrosion resistant materials for long term operation in outdoor environments

² Natatorium rating: Coating and sealant will be changed to high corrosion resistant materials to prevent damage from long term exposure to chlorine vapors

NOVALINK NON-ILLUMINATED

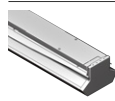
	MODEL	NL2 NovaLink 2ft	NL4 NovaLink 4ft	NLC¹ NovaLink Corner
NO	WATTAGE	NO Non-Illuminated		
	FINISH	BLK Black	WHT White	
	MOUNTING	AD10 Adjustable Cable 10ft	ST2 Stem 2ft	ST4 Stem 4ft

¹ NLC option does not require mounting

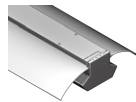
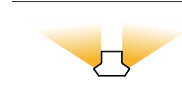
PART REFERENCE



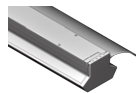
NL2-NO
24.87" x 5.48" x 3.78"



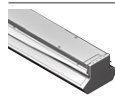
NL2-D120
Dual Uplight : 2x 60W (16,805 lm*)



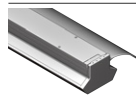
NL2-D120 with 2x NLB-2
Dual Downlight : 2x 60W (11,260 lm*)



NL2-D120 with 1x NLB-2
Uplight : 60W (8,400 lm)
Downlight : 60W (5,630 lm)



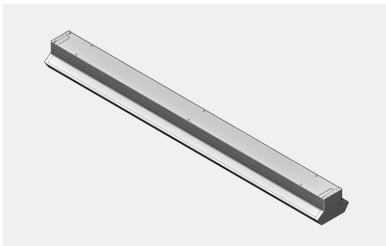
NL2-S100
Single Uplight : 100W (12,625 lm)



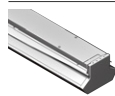
NL2-S100 with 1x NLB-2
Single Downlight : 100W (8,300 lm)



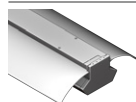
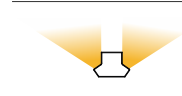
*Total lumens from both sides



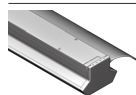
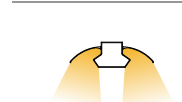
NL4-NO
48.1" x 5.48" x 3.78"



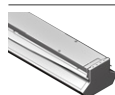
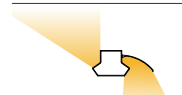
NL4-D240
Dual Uplight : 2x 120W (33,610 lm*)



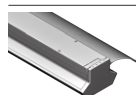
NL4-D240 with 2x NLB-4
Dual Downlight : 2x 120W (22,520 lm*)



NL4-D240 with 1x NLB-4
Uplight : 120W (16,805 lm)
Downlight : 120W (11,260 lm)



NL4-S200
Single Uplight : 200W (25,250 lm)

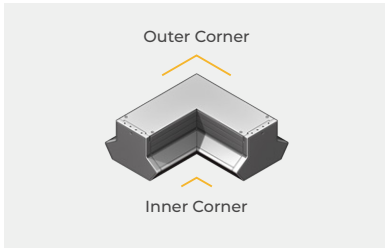


NL4-S200 with 1x NLB-4
Single Downlight : 200W (16,600 lm)



*Total lumens from both sides

PART REFERENCE



NLC-NO
10.31" x 10.31" x 3.78"

	NLC-D70 Outer Corner : 47W (6,445 lm) Inner Corner : 23W (3,150 lm)	
	NLC-D70 with NLB-CI, NLB-CO Outer Corner : 47W (4,255 lm) Inner Corner : 23W (2,080 lm)	
	NLC-D70 with NLB-CI Outer Corner : 47W (6,445 lm) Inner Corner : 23W (2,080 lm)	
	NLC-D70 with NLB-CO Outer Corner : 47W (4,255 lm) Inner Corner : 23W (3,150 lm)	
	NLC-SO60 Outer Corner : 60W (8,230 lm)	
	NLC-SI30 Inner Corner : 30W (4,115lm)	
	NLC-SO60 with NLB-CO Outer Corner : 60W (5,430 lm)	
	NLC-SI30 with NLB-CI Inner Corner : 30W (2,715 lm)	

TECHNICAL DETAILS

NovaLink System

- **NovaLink is compatible with Bolt Nova** in both Static White and RGBW models, available in **700W** and **1050W** outputs. To ensure proper system integration, please specify NovaLink and Bolt Nova configurations together when placing an order. For detailed fixture data, refer to the Bolt Nova specification sheet, or contact us for expert assistance in planning and specifying your project.

Electrical

- Power Input : Universal (120-277V)
- Operating Temperature : -40°F~112°F
- Surge Protection : Built-in is 4kV

LED Features

- Color Temperature : 3000K, 3500K, 4000K, 5000K
- CRI 85
- Long lasting LED luminaire tested under TM21 lumen maintenance L70 @ 100,000 Hrs

Advanced Dimming

- Proprietary VX Driver™ is incorporated to all dimming options for video flicker-free lighting
- Standard 0-10V : Dims to 10%

Housing

- Dimensions :
NovaLink 2ft : 24.9" x 5.5" x 3.8"
NovaLink 4ft : 48.2" x 5.5" x 3.8"
Corner : 11.1" x 5.48" x 3.78"
- Material : High Pressure Die-Cast Aluminum, Corrosion-resistant fluorocarbon-coated steel, Tempered Glass
- Weight :
NovaLink 2ft : 10.8 lbs
NovaLink 4ft : 21.6 lbs
Corner : 5.5 lbs

Mounting

- Adjustable Cable 10ft
- Stem 2ft, 4ft

Warranty

- 5-year limited warranty

Listing

- ETL Wet Location Listed
- CE
- FCC
- IP66

NOVALINK PERFORMANCE SUMMARY*

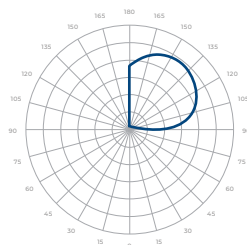
Delivered Lumens				
CCT/WATTAGE	3000K	3500K	4000K	5000K
NOVALINK 2 FT				
D120*	15,905 lm	16,240 lm	16,750 lm	16,805 lm
D120* DOWNLIGHT BLADE	10,655 lm	10,880 lm	11,220 lm	11,260 lm
S100	11,975 lm	12,200 lm	12,580 lm	12,625 lm
S100 DOWNLIGHT BLADE	7,855 lm	8,020 lm	8,270 lm	8,300 lm
NOVALINK 4 FT				
D240*	31,805 lm	32,485 lm	33,500 lm	33,610 lm
D240* DOWNLIGHT BLADE	21,310 lm	21,765 lm	22,445 lm	22,520 lm
S200	23,890 lm	24,400 lm	25,165 lm	25,250 lm
S200 DOWNLIGHT BLADE	15,710 lm	16,045 lm	16,545 lm	16,600 lm
NOVALINK CORNER				
D70*	9,090 lm	9,280 lm	9,570 lm	9,595 lm
D70* DOWNLIGHT BLADE	6,000 lm	6,125 lm	6,315 lm	6,335 lm
S130	3,895 lm	3,980 lm	4,100 lm	4,115 lm
S130 DOWNLIGHT BLADE	2,570 lm	2,625 lm	2,705 lm	2,715 lm
SO60	7,790 lm	7,955 lm	8,205 lm	8,230 lm
SO60 DOWNLIGHT BLADE	5,140 lm	5,250 lm	5,415 lm	5,430 lm

Current Consumption		
CCT/WATTAGE	120V	277V
D120	1.1A	0.48A
D240	2.2A	0.95A
S100	0.92A	0.4A
S200	1.83A	0.79A
D70	0.64A	0.28A
S130	0.28A	0.12A
SO60	0.55A	0.24A

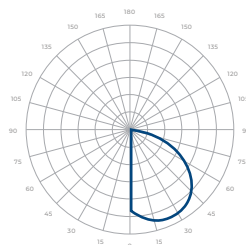
*Tolerance±8% *Total lumens from both sides

PHOTOMETRICS*

Below is a typical photometric representation of the NovaLink fixture. Please download IES files to ensure exact photometric value.



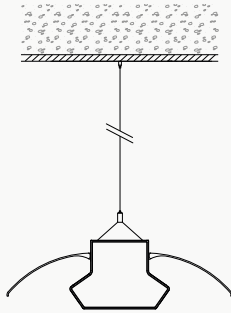
DIRECT



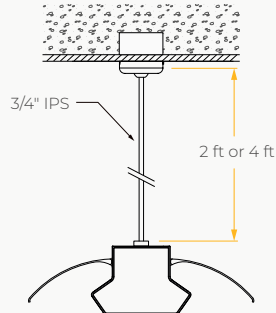
DOWNLIGHT BLADE

MOUNTING OPTIONS

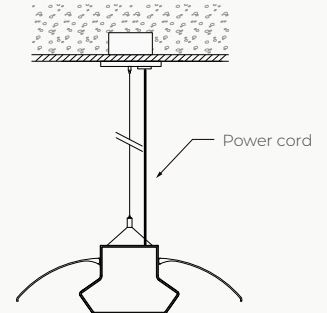
Adjustable Cable Mount



Stem Mount

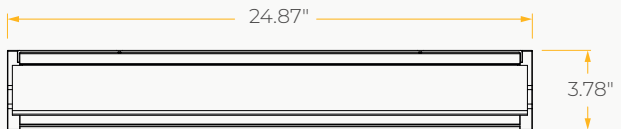
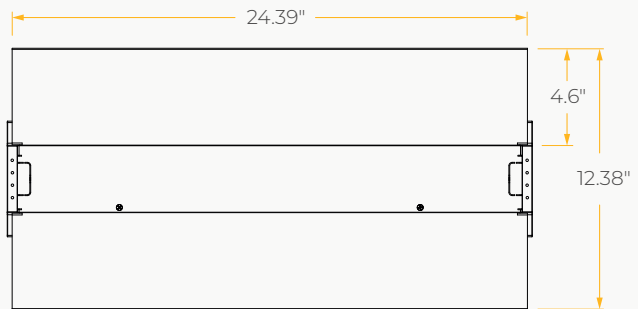
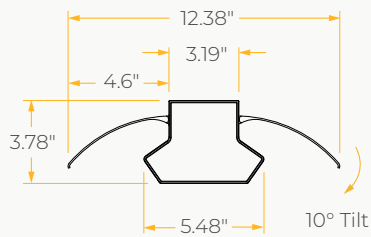
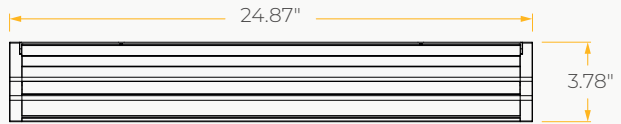
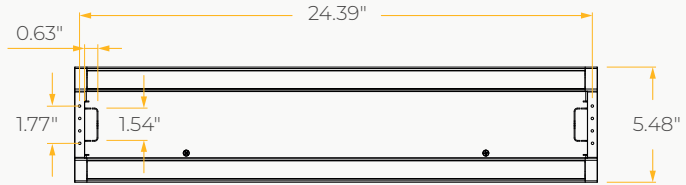
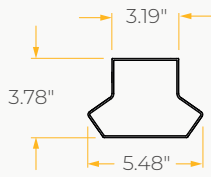


Adjustable Cable
With Power Cord



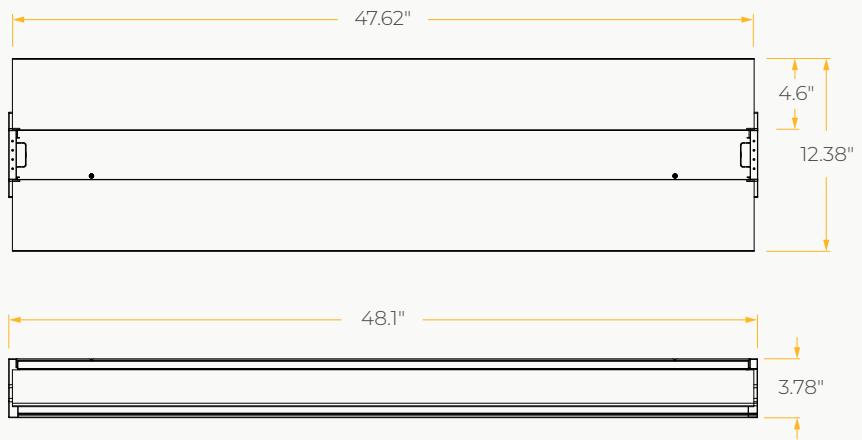
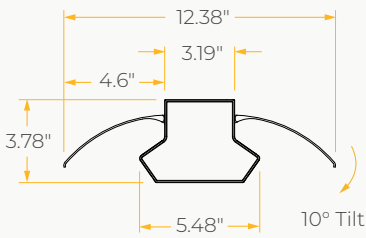
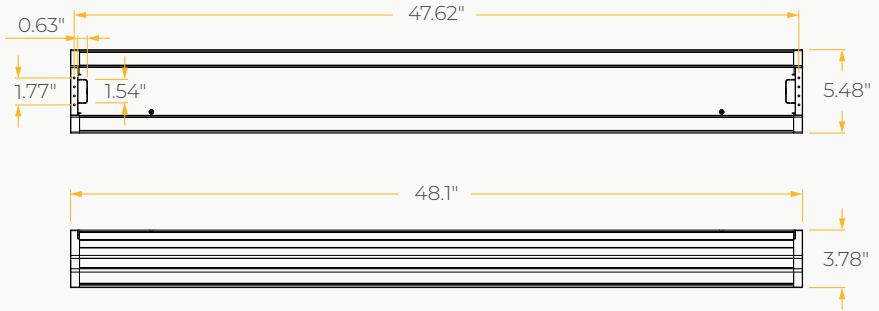
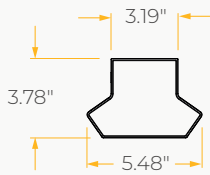
DIMENSIONS

NovaLink 2 ft



DIMENSIONS

NovaLink 4 ft



DIMENSIONS

NovaLink Corner Block

