

# SH-130

exteria

## SPECIFICATION SHEET

Architectural, functional and green renewable. Exteria Solar LED Pavers blend efficient solar panels with a reliable ultracapacitor power solution, delivering eco-friendly and lasting illumination. Designed for minimal maintenance, these lights come in various square shapes, suitable for pathways and outdoor spaces. The anti-skid, wire-free, plug-and-play installation ensures a straightforward and practical lighting solution for your surroundings.

## FINISH



Brushed  
Stainless Steel



Polished  
Stainless Steel



SUS316  
Stainless Steel



Brass

## CCT



Amber



Blue



Green



Red



White

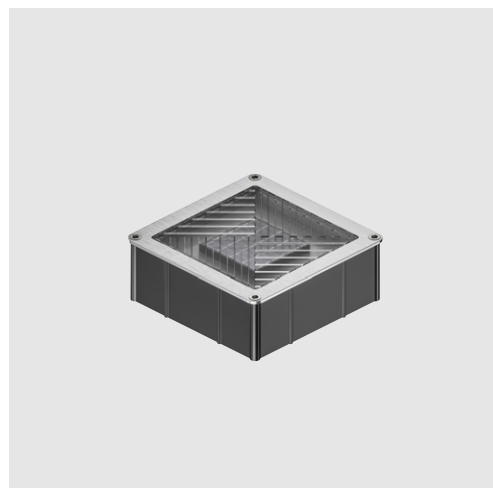


Warm White

## MOUNTING



Inground



## Plug-and-Play

Designed for effortless deployment, the solar fixtures operate independently with no external wiring or transformers required. Installation is quick and clean, with no trenching, re-paving, or complex electrical connections, making them ideal for both new and retrofit projects.

## LISTING

IP68

CE

FC



**ELECTRICAL**

Power Storage	Ultracapacitor
Charging Time	Requires approximately 6 hours of direct sunlight for a full charge

**PHOTOMETRIC PERFORMANCE**

Color Temperature	Amber, Blue, Green, Red, White, Warm White
-------------------	--

**OPERATIONAL**

Operating Duration	Provides a minimum of 12 hours of illumination when fully charged, or 4–8 hours when charged under overcast weather conditions
Control System	Integrated light-sensitive automatic on/off switch

**PHYSICAL**

Dimension	4.01" x 4.01" x 1.81"
Material	SUS304 stainless steel, cast aluminum, GE super light permeable PC
Rim Finish	Brushed/polished stainless steel; optional: SUS316 stainless steel/brass
Weight	0.97lbs
Compressive Strength	9,902 lbs (4,456 kg) — Pedestrian-only, not rated for vehicular loads

**ENVIRONMENTAL**

Operating Temperature	-4°F ~ 140°F
Storage Temperature	-13°F~176°F
Ingress Protection	IP68
Listing	RoHS, CE, FCC

**WARRANTY**

Warranty	3-year limited warranty
----------	-------------------------

## CATALOG

PROJECT	TYPE	QUANTITY
---------	------	----------

PRODUCT CONFIGURATOR Try our **product configurator** on our website to easily specify your requirements and add items to a fixture list.

MODEL	CCT	RIM FINISH	HS
<b>SH130C</b> SH-130 Solar LED Paver  <b>SH130B</b> Battery Sample	<b>AMB</b> Amber  <b>BLU</b> Blue  <b>GEN</b> Green  <b>RED</b> Red  <b>WHT</b> White / 5500K - 6000K  <b>WAM</b> Warm White / 2800K - 3000K	<b>BS</b> Brushed Stainless Steel  <b>PS</b> Polished Stainless Steel  <b>SS</b> SUS316 Stainless Steel  <b>BR</b> Brass	<b>HS</b> Housing with Anchor Plate Included

## PERFORMANCE

COLOR	LUX(Average)
Amber	25 lx
Blue	25 lx
Green	60 lx
Red	70 lx
White	30 lx
Warm White	28 lx

## DIMENSIONS

